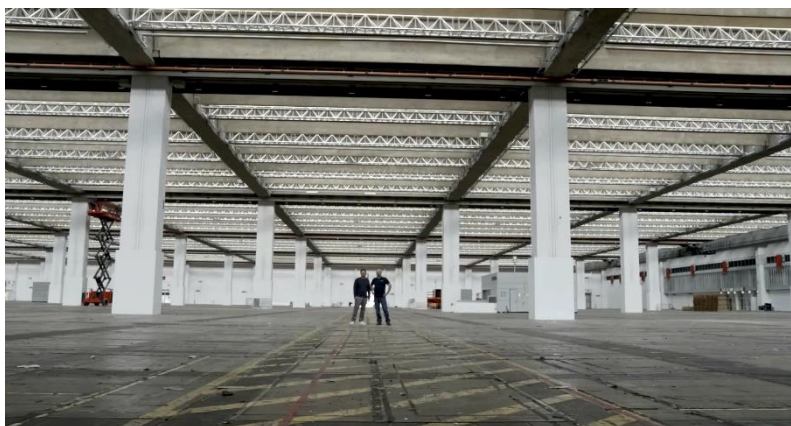


## Better, cheaper, more versatile: new rigging options in Hall 8 at Messe Frankfurt

Frankfurt am Main, 05 12 2023

**In collaboration with its service partner UEBERKOPF, Messe Frankfurt has installed a new rigging substructure in the 30,000 square metre in Hall 8. The truss grid will enable exhibitors' rigging requirements to be realised more easily, quickly and cost-effectively in future. Another advantage is the reduction of the changeover time between the events in Hall 8.. This ensures greater flexibility in Messe Frankfurt's busy event calendar.**

The challenging project was planned for a long time, but was completed a few weeks ago. A total of 210 three-point trusses, each 18 metres long, were installed in the hall. "The truss is a special project," says Jan Thommen, Managing Director of UEBERKOPF. "The special thing about it is that it is a three-point truss. Normally, heavy-duty trusses are always designed as four-point trusses. However, due to the roof structure of the hall and the basic requirements for the permanently installed heavy-duty lifting beam system, a different design had to be used for this project. The triangular truss type made it possible for the trusses to disappear into the roof structure in the best possible way and, despite the sloping roof, to optimally transfer the temporary loads between the suspension points into the roof structure. Another advantage of this design is the lower dead weight. This means that exhibitors can be provided with the greatest possible payload for temporary suspensions. The particularly high load-bearing capacity of the triangular heavy-duty truss was made possible by one of the largest main tubes ever used in event technology."



The truss grid is 6.80 metres by 3.50 metres and each of the three-point trusses allows for up to 4x500 kg or 7x300 kg heavy load points under the hall ceiling. In addition, further suspensions of up to 460 kg can be installed on the 420 support profiles on which the trusses rest. And to mention another impressive figure: The weight of around 14 adult

male elephants now hangs below the hall ceiling. The 3,780 metre-long trusses alone weigh almost 88,140 kilograms. Cordelia von Gymnich, Head of Services at Messe Frankfurt Venue GmbH, is delighted with the new possibilities: "In recent years, we have been confronted with major challenges in Hall 8. Due to the change in stand construction towards open and flying exhibition stands, suspensions always had to be realised with elaborate rigging substructures in this highly sought-after hall. We therefore looked for a solution that would make it easier for exhibitors and organisers to suspend stands. The concept that UEBERKOPF offered was the most convincing. This solution meets the architectural and technical requirements of the hall."

A video about the new rigging options in Hall 8 is available [here](#).

**Press information and photographic material:**

<http://messefrankfurt.com/journalisten>

**Visit us online:**

[www.instagram.com/messefrankfurt](http://www.instagram.com/messefrankfurt)

[www.linkedin.com/company/messe-frankfurt-gmbh](http://www.linkedin.com/company/messe-frankfurt-gmbh)

[www.twitter.com/messefrankfurt](http://www.twitter.com/messefrankfurt)

[www.youtube.com/user/messefrankfurt](http://www.youtube.com/user/messefrankfurt)

**Your contact:**

Cordelia von Gymnich

Tel.: +49 69 75 75-6100

[Cordelia.von.Gymnich@MesseFrankfurt.com](mailto:Cordelia.von.Gymnich@MesseFrankfurt.com)

Messe Frankfurt GmbH

Ludwig-Erhard-Anlage 1

60327 Frankfurt am Main

[www.messefrankfurt.com](http://www.messefrankfurt.com)

**Background information on Messe Frankfurt**

[www.messefrankfurt.com/background-information](http://www.messefrankfurt.com/background-information)

**Sustainability at Messe Frankfurt**

[www.messefrankfurt.com/sustainability-information](http://www.messefrankfurt.com/sustainability-information)